

MOMENTO™

Table of Contents

What's in the box?.....	2
Product Overview.....	3
Device Installation.....	4
Specifications.....	5
Momento Dashcam App	
Main Page.....	6
Connection.....	7
Angle Adjustment.....	9
Live View.....	10
Download.....	12
Playback.....	13
Tracking.....	14
Export.....	15
Settings.....	16
Video Exposure/Voice Control/Buttons.....	21
Troubleshooting Connectivity	22
Compliance Statements.....	23

Start Guide



Package Components



Main Camera



Main Camera Cable



Power Cable



Rear Camera



Rear Camera Cable



Micro SD Card

WARNING

Do not operate the dashcam while driving. Distracted driving can lead to accidents

- MOMENTO is not responsible for any data loss and will not compensate for any loss. Also, based on the user's setting and environment, please be informed that the device may NOT record videos of all accidents.
- The device and the recorded videos are intended for reference and personal use only.

MOMENTO™



Mark	Description
① Wi-Fi	Wi-Fi ON/OFF Button
② LED	Wi-Fi / REC (White)
③ REC	Manual Recording Button
④ Camera Lens	Front camera for video recording
⑤ MIC	Microphone for voice and audio recording
⑥ Micro SD	Memory card slot
⑦ Mount	Installation mount
⑧ Speaker	Voice guidance
⑨ Camera casing	Angle adjustment of the camera
⑩ USB-C Port	Power cable port
⑪ Front LED	Security LED(White)

Device Installation

Caution

- Make sure to install the device in a safe area and that the engine is OFF.
- Make sure the installation area is clean.
- Disconnect the power cable if you are not using the device for a long period of time.


Caution when inserting Micro SD card

- An SD card is pre-installed for your convenience.
- Do not apply excessive force on the Micro SD card or insert in the wrong direction.
Any actions which may cause an SD card error, will be the responsibility of the user.
- Make sure the device is turned off when you pull out the SD card.

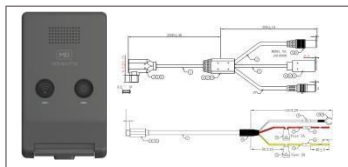
Camera installation



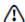
- (1) Select and clean the area where the product will be installed.
- (2) Remove the double-sided tape and press firmly onto the cleaned area.
- (3) Connect the main camera and the mount.
- (4) Connect the cable of the rear camera to the USB-C type connector of the rear camera and connect it to the 3.5pi jack of the main power cable.
- (5) Connect the power cable and Main cable & remove a sticker from each camera lens.

 To avoid interrupted reception with other devices such as a navigation, make sure the wiring is not overlapped with enough space in between.

Connecting Hardwire Cable



BLACK: GND
YELLOW: BAT(B+)
RED: ACC

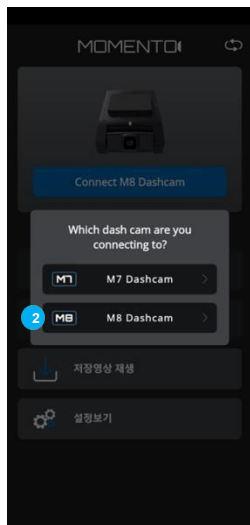
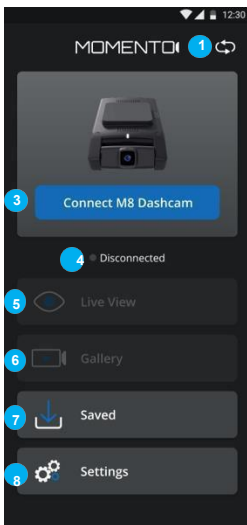
 Please visit a professional installer to connect hardwire cable.

Specifications

Item		Description
Micro SDCard Capacity		Up to 256GB
Camera FOV	Front	129°(D) x 112°(H) x 96°(V)
	Rear	146°(D) 116°(H) 62°(V)
ECOMode Operation		24GHz Radar Sensor Motion detection
GNSSSupport		GPS,BEIDOU Built-In Support
Input Power Source		DC12V / 24V
Operation Temperature		-20° ~ +60°C
Storage Temperature		-30° ~ +70°C

1. Main Page

M8 supports dual band Wi-Fi 2.4 & 5GHz (Default) which can be used to establish connection between the camera and the app.

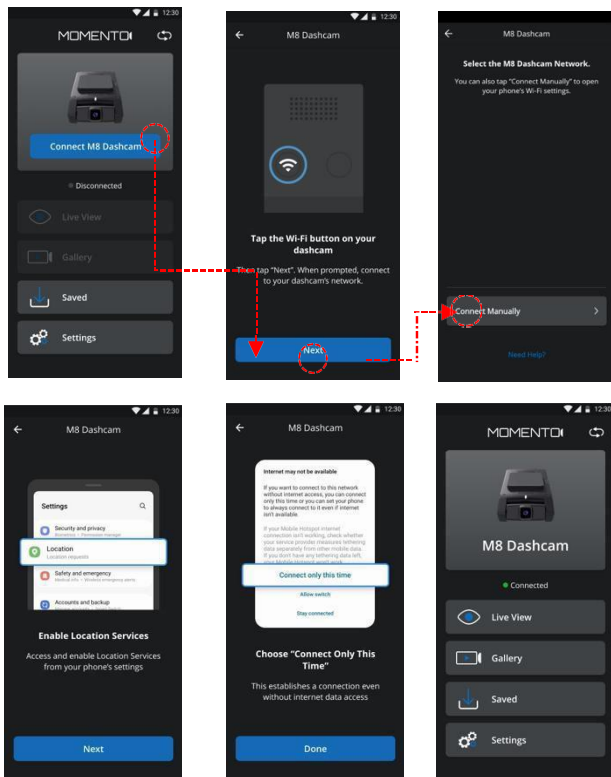


No	Description
①	Switch Dashcam Model(M8 or M7 Wi-Fi)
②	Select dashcam's model (M7 Wi-Fi or M8)
③	Connect dashcam through Wi-Fi
④	Show dashcam's connection status
⑤	Live View (Available when dashcam is connected)
⑥	Gallery Streaming (Available when dashcam is connected)
⑦	View Saved Videos from Gallery (No connection required)
⑧	Settings

2. Connect Dashcam

By default, the dashcam will broadcast its Wi-Fi network when the vehicle ignition is turned "On." To confirm that the Wi-Fi is active, check if the Wi-Fi LED indicator is lit. If the LED is not illuminated, press the Wi-Fi button to activate the Wi-Fi.

1. Connect Manually

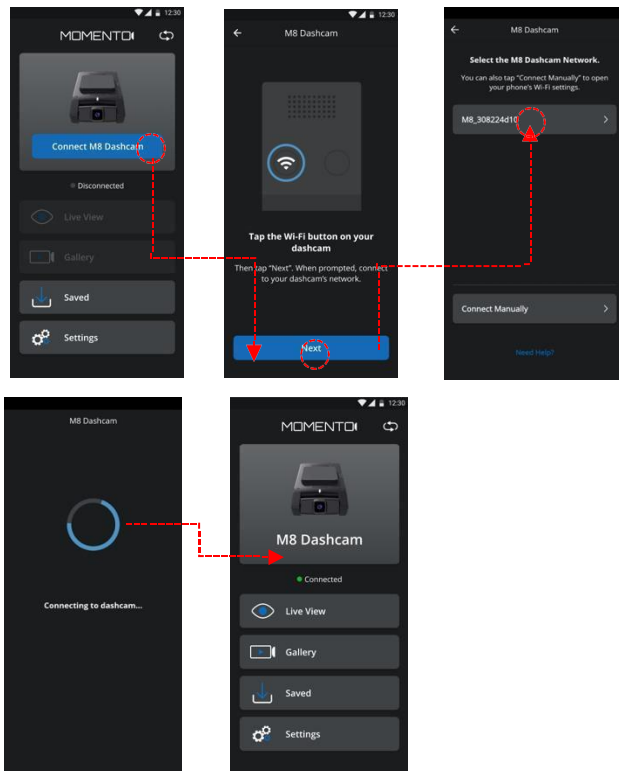


Manual Connect is required for the initial setup. Find the M8's Wi-Fi network on your phone's Wi-Fi network list and connect by using the password "12345678", then return to the App.

2.2 EasyConnect

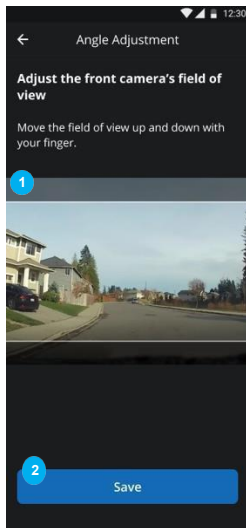
After you've done the manual setup successfully, you can connect dashcam through the "Easy Connected" menu moving forward.

If you want to connect new dashcam, use the "Connect Manually" menu.



2.3 Angle Adjustment

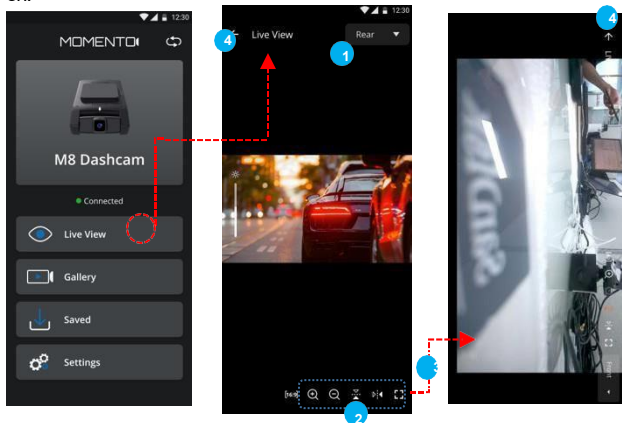
After connecting to the dashcam, you can adjust the front camera's viewing angle by sliding it up or down. Note that exported videos will include the full angle, even beyond your selected view. You can change the angle later in the settings.



No	Description
①	Scroll to choose your field of view for playback
②	Save & Exit
③	Click to re-adjust your camera angle
④	Save & return to the settings menu

3. LiveView

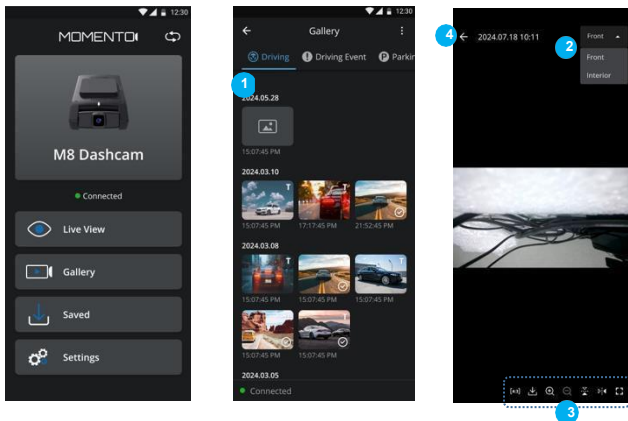
You can view live video from your dashcam. If you have rear or interior cameras, you can switch between views. The live page offers several video control options, but remember, the dashcam won't record while live view is on.



No	Description
①	Select video channel (Front, Rear, Interior)
②	Video control options 1. Video Ratio(4:3, 16:9) 2. Zoom In 3. Zoom Out 4. Flip 5. Mirror 6. Wide View
③	If you click "Wide View" option, landscape mode is enabled.
④	Go back to the previous page

4. Gallery

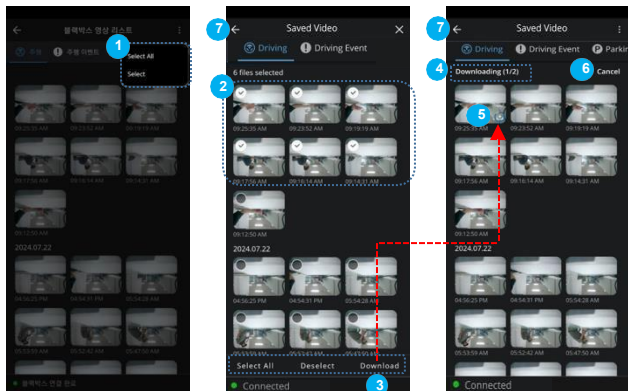
You can view recorded video from your dashcam. If you install a rear camera or indoor camera, you can select a video channel through a simple menu. Gallery page supports video control options. You can also view wide view mode.



No	Description
①	Video thumbnail (sorted by date & time)
②	Select video channel (Front, Rear, Cam 1)
③	Video control options 1. Video Ratio(4:3, 16:9) 2. Download 3. Zoom In 4. Zoom Out 5. Flip 6. Mirror 7. Wide View
④	Go back to the previous page

4. Gallery(Download)

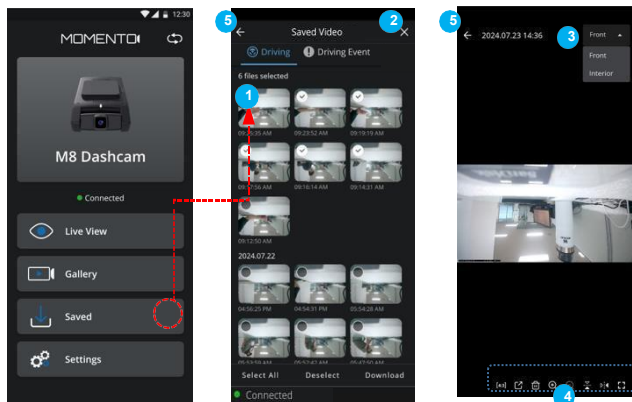
The gallery page supports thumbnails to help you find recorded videos. You can select multiple video files you want to download. The download feature can also work in background mode on your mobile.



No	Description
①	Edit menu
②	Multi selection menu
③	Download menu
④	Download file count(current / total)
⑤	Download status of each video file
⑥	Cancel download
⑦	Go back to the previous page

5. Saved(Playback)

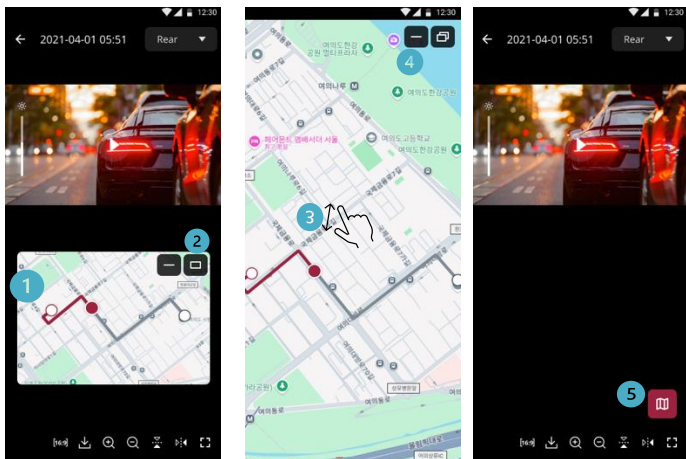
You can play back saved video files even in offline mode, meaning when the dashcam is disconnected. The playback feature also supports audio. Additionally, you can export or delete saved files as needed.



No	Description
①	Video thumbnail (sorted by date & time)
②	Edit menu (file delete)
③	Select video channel (Front, Rear, Interior)
④	Video control options 1. Video Ratio(4:3, 16:9) 2. Export Saved Video File 3. File Delete 4. Zoom In 5. Zoom Out 6. Flip 7. Mirror 8. Wide View
⑤	Go back to the previous page

5. Saved (Tracking)

You can view the vehicle's location on a map for saved videos. This feature requires an internet connection, so you'll need to disconnect from the dashcam's network to utilize this feature.

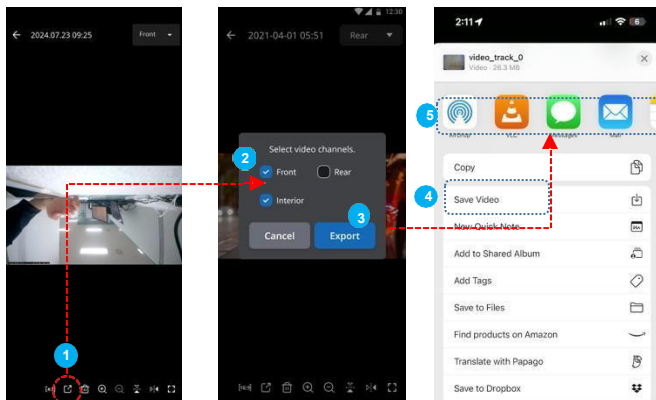


If the map still doesn't load while connected to internet, then force lose and restart the app.

No	Description
①	Track vehicle route from start to end
②	Expand the map view
③	Pinch to zoom in or out
④	Minimize the map display
⑤	Re-open the map view

5. Saved(Export)

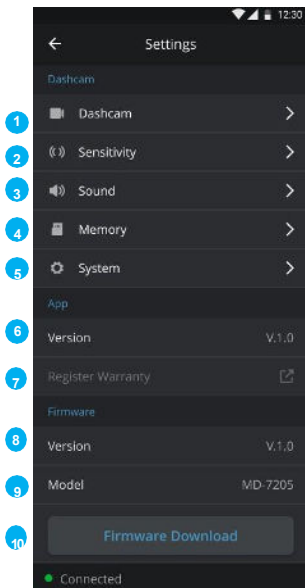
You can export saved video files to your phone's gallery. Once the files are exported, you can easily share your videos as supported by your mobile device.



No	Description
①	Export saved video file
②	Video channel selection
③	Export Video
④	Save Video to phone's gallery
⑤	Share Video as supported by mobile device

6. Settings (Main)

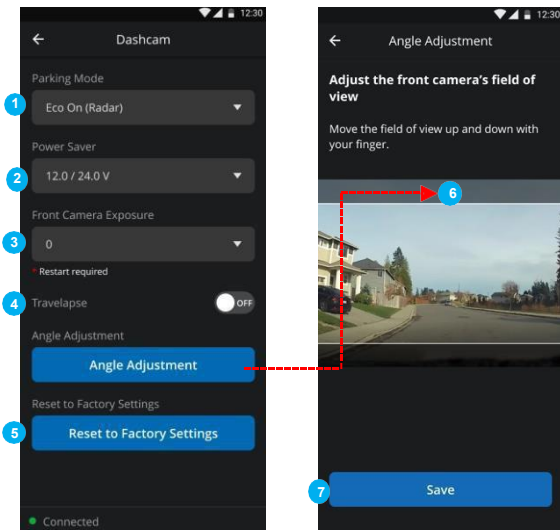
You can change dashcam's settings through the mobile application.



No	Description
①	Dashcam Settings
②	Sensitivity Settings
③	Sound Settings
④	Memory Settings
⑤	System Settings
⑥	Mobile App's Version
⑦	Register Warranty
⑧	Firmware Version
⑨	Dashcam's Model Number
⑩	Firmware Update Update dashcam's firmware through the Wi-Fi.

6. Settings (Dash cam)

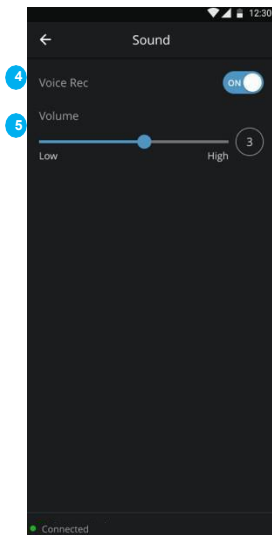
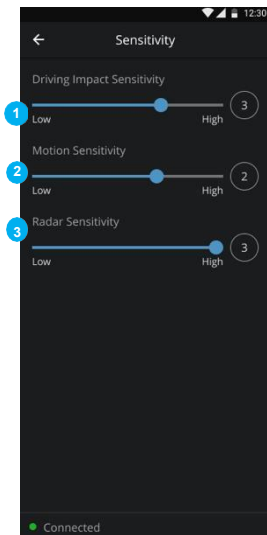
You can change dashcam's parking mode, low power voltage level, travelapse on/off, angle adjustment, and factory reset.



No	Description
①	Parking Mode 1. ECOOn(Radar) 2. ECOOff (Motion) 3. Timelapse 4. Off
②	Low Voltage Cut Level (11V ~ 24.3V)
③	Change the exposure level of the Front Camera(Restart Required)
④	Travelapse Recording On/Off (No Audio)
⑤	FactoryReset (No effect on saved videos)
⑥	Angle Adjustment
⑦	Save the Angle Adjustment Settings

6. Settings (Sensitivity & Sound)

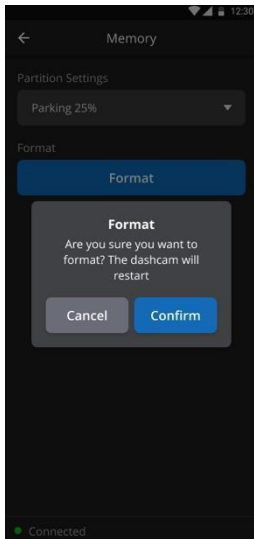
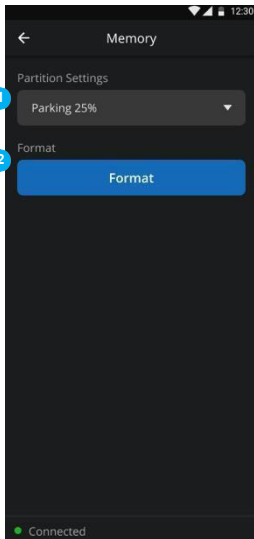
You can change dashcam's sensitivity and sound.



No	Description
①	Driving Impact Sensitivity (0 ~ 5)
②	Motion Sensitivity (0 ~ 3)
③	Radar Sensitivity (1 ~ 3)
④	Audio Recording On/Off
⑤	Speaker Volume (0 ~ 5)

6. Settings (Memory)

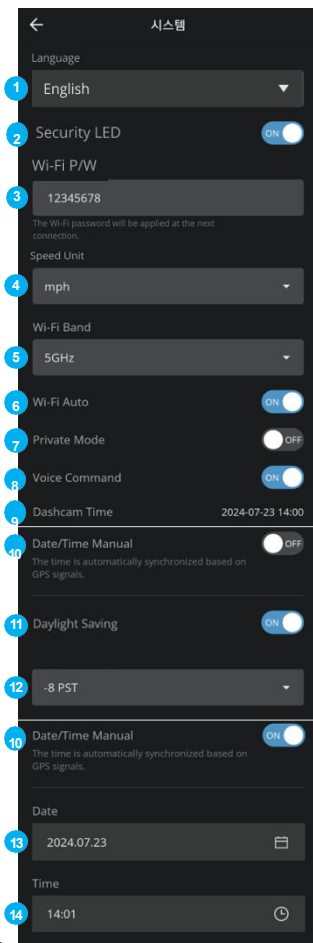
You can change dashcam's memory partitions.



No	Description
①	Parking Mode Capacity Selection 1. Parking 0% 2. Parking 25% 3. Parking 50%
②	SDCard Format

6. Settings (System)

You can change dashcam's system.



No	Description
①	Select English or French
②	Security LED On/Off
③	Wi-Fi Password
④	Speed Unit (mp/h or km/h)
⑤	Wi-Fi Band (2.4GHz or 5GHz)
⑥	Wi-Fi Auto On/Off
⑦	Privacy Mode On/Off
⑧	Voice Command On/Off
⑨	Dashcam's Current Time
⑩	Date/Time Manual On/Off
⑪	Daylight Saving Time On/Off
⑫	Time Zone
⑬	Date Manual Settings
⑭	Time Manual Settings

7. Exposure

The front camera's exposure level can be adjusted from -2 to +2 to suit various driving conditions. Increasing exposure improves visibility in dark scenes but may add noise and color distortion, while lowering it darkens the image and reduces noise.

Please note, changes require a dashcam restart and won't affect previously recorded videos.

8. Voice Control

You can conveniently control essential functions of the M8 using Voice Control. Just say "Hi Momento" or "Hi Dashcam," wait for the chime, and then state your command.

Function	Audio Alert
Enable Wi-Fi	Wi-Fi is On
Disable Wi-Fi	Wi-Fi is Off
Enable Privacy Mode	Privacy Mode is On
Disable Privacy Mode	Privacy Mode is Off
Enable Mic	Voice recording enabled
Disable Mic	Voice recording disabled
Switch Wi-Fi	Wi-Fi settings updated 5GHz <-> 2.4GHz
Save Video	Start Manual Recording

9. Buttons

Action	Description
Wi-Fi Button – Tap	Turn Wi-Fi On/Off
Wi-Fi Button – Hold 10s	Format SDCard (Erases all recordings)
RecButton – Tap	Initiate manual recording
RecButton – Hold 3s	Turn Mic On/Off
Wi-Fi & RecButton – Hold 10s	Initiate a Factory Reset

Troubleshooting Connectivity

You can activate Wi-Fi on M8 dashcam with the vehicle engine ON and OFF. Please ensure the LED above the Wi-Fi button is ON before trying the following.

Important (iOS & Android)

1. Turn Airplane Mode ON
2. Turn Bluetooth OFF
3. Turn VPN OFF

For iPhone

If you followed the steps above but you're still unable to connect, please access the Momento Dashcam Viewer App settings from the phone's settings to ensure the following:

- Set Location Sharing to "Always"
- Turn Local Network "ON"

For Android

When initially connecting to the M8 Dashcam Wi-Fi, please make sure to select "Connect Only This Time" if the prompt is available

Wireless CarPlay/Android Auto

By default, Wireless CarPlay and Android Auto are designed per their respective protocols to take priority over other Wi-Fi connections. This means that when Wireless CarPlay or Android Auto is active, it will override other Wi-Fi connectivity, including the M8 dashcam connection.

To connect to the M8 dashcam via Wi-Fi, **Bluetooth must be turned off** to prevent interference with Wireless CarPlay or Android Auto.

For the best experience, we recommend using the M8 dashcam over Wi-Fi while the vehicle is **parked and turned off**, ensuring a stable connection without any interruptions from the vehicle's infotainment system.

Compliance Statements

Canadian Compliance Statements:

This device complies with Industry Canada's licence-exempt RSSs. Operation is subject to the following two conditions: (1) this device may not cause interference, and (2) this device must accept any interference, including interference that may cause undesired operation of the device.

This Class B digital apparatus complies with Canadian ICES-003.

This device and its antenna(s) must not be co-located or operating in conjunction with any other antenna or transmitter. This equipment should be installed and operated with a minimum distance of 20cm between the radiator and your body.

It is the responsibility of the installer to ensure that when using the outdoor antenna kits, only those antennas certified with the product are used. The use of any antenna other than those certified with the product is expressly forbidden by FCC rules 47 CFR part 15.204 and IC RSS standards.

FCC Warning:

15.21 Information to user.

The user's manual or instruction manual for an intentional or unintentional radiator shall caution the user that changes or modifications not expressly approved by the party responsible for compliance could void the user's authority to operate the equipment. In cases where the manual is provided only in a form other than paper, such as on a computer disk or over the Internet, the information required by this section may be included in the manual in that alternative form, provided the user can reasonably be expected to have the capability to access information in that form.

15.105 Information to the user.

This equipment has been tested and found to comply with the limits for a Class B digital device, pursuant to part 15 of the FCC Rules. These limits are designed to provide reasonable protection against harmful interference in a residential installation. This equipment generates, uses, and can radiate radio frequency energy and, if not installed and used in accordance with the instructions, may cause harmful interference to radio communications. However, there is no guarantee that interference will not occur in a particular installation. If this equipment does cause harmful interference to radio or television reception, which can be determined by turning the equipment off and on, the user is encouraged to try to correct the interference by one or more of the following measures:

Reorient or relocate the receiving antenna.

Increase the separation between the equipment and receiver.

Connect the equipment into an outlet on a circuit different from that to which the receiver is connected.

Consult the dealer or an experienced radio/TV technician for help.

FCC RF Radiation Exposure Statement

This equipment complies with FCC radiation exposure limits set forth for an uncontrolled environment. This transmitter must not be co-located or operating in conjunction with any other antenna or transmitter. This equipment should be installed and operated with a minimum distance of 20 cm between the antenna and your body. Users must follow the specific operating instructions for satisfying RF exposure compliance.

MODEL: M8 / HVIN:M8

FCC ID:2ABC6-M8 / IC:11570A-M8

Contains FCC ID:2AD56HLK-LD2410-P

Contains IC ID:31099-LD2410

Made in Korea



FCC Compliance Statement This device complies with part 15 of the FCC Rules. Operation is subject to the following two conditions: (1) This device may not cause harmful interference, and (2) This device must accept any interference received, including interference that may cause undesired operation.

MOMENTO™